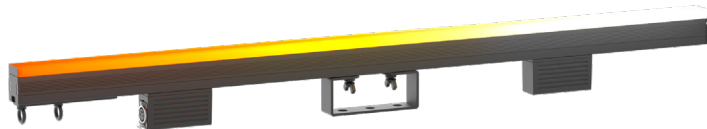


# DigiStrip IP100

100 cm IP65 outdoor LED video pixel strip with 10 mm pixel pitch.

ORDER CODE: **DIGISTRIPIP100**



**DigiStrip IP100** is a linear LED 10 mm pixel pitch video fixture for the rental market with an extensive range of optical accessories for a wide variety of looks (black and white and transparent). Each 1 meter long strip features 100 RGB / FC LEDs with individual pixel control and a 100° viewing angle. The mechanics of **DigiStrip IP100** have been studied to grant greater mounting flexibility by adding sliding hardware on the back for truss application and on the side for multiple vertical linking. The external control unit **DigiDriver IP** is compatible with Art-Net and Kling-Net protocol and runs both signal and power over a 4 pole cable that provides greater stability and connection in a daisy chain (up to 20 **DigiStrip IP100**)

## MAIN FEATURES

- High-resolution IP65 rated video pixel batten, featuring 100 LEDs in a row
- Several optional optical filters delivering a wide range of different looks and finishes
- Easy setup and wiring through the DigiDriver IP

## TECHNICAL SPECIFICATION

### LIGHT SOURCE

- Source: 100x0,25W RGB LEDs
- Luminous flux: without cover: 542 lm - black cover: 81 lm - flat white cover: 319 lm - dome white cover: 351 lm @full
- Lux: without cover: 7 lx - black cover: 1 lx - flat white cover: 3 lx - dome white cover: 2 lx @5 m full
- Other: view angle 100° - driver chip MBI 5043
- Source life expectancy: > 50.000 h

### OPTICS

- Pixel pitch: 10 mm
- Additional optics: black cover and white dome cover (included)
- Other: flat white cover (included)

### COLOUR SYSTEM

- Colour mixing: RGB / FC

### BODY

- Hardware on-board: on board mechanics for modular assembly of multiple fixtures
- Body: sturdy aluminum profile
- Body colour: white optic and body black

### CONTROL

- Control units: 20 pcs power & signal under 1 pc DIGIDRIVERIP
- Art-Net channels: 300 ch
- Protocols: Art-Net, Kling-Net, sACN
- Pixel control: pixel2pixel control

### ELECTRICAL

- Mains power supply: DC 48V
- Max power consumption: 25W

### PHYSICAL

- Suspension and fixing: bracket for truss rigging and hardware for connection of more units
- Signal connection: Seetronic XLR 4p IN/OUT connectors
- IP rating: 65 for temporary outdoor application, not for fixed installation
- Dimensions (WxHxD): 1.000x36x128 mm
- Weight: 2,7 kg

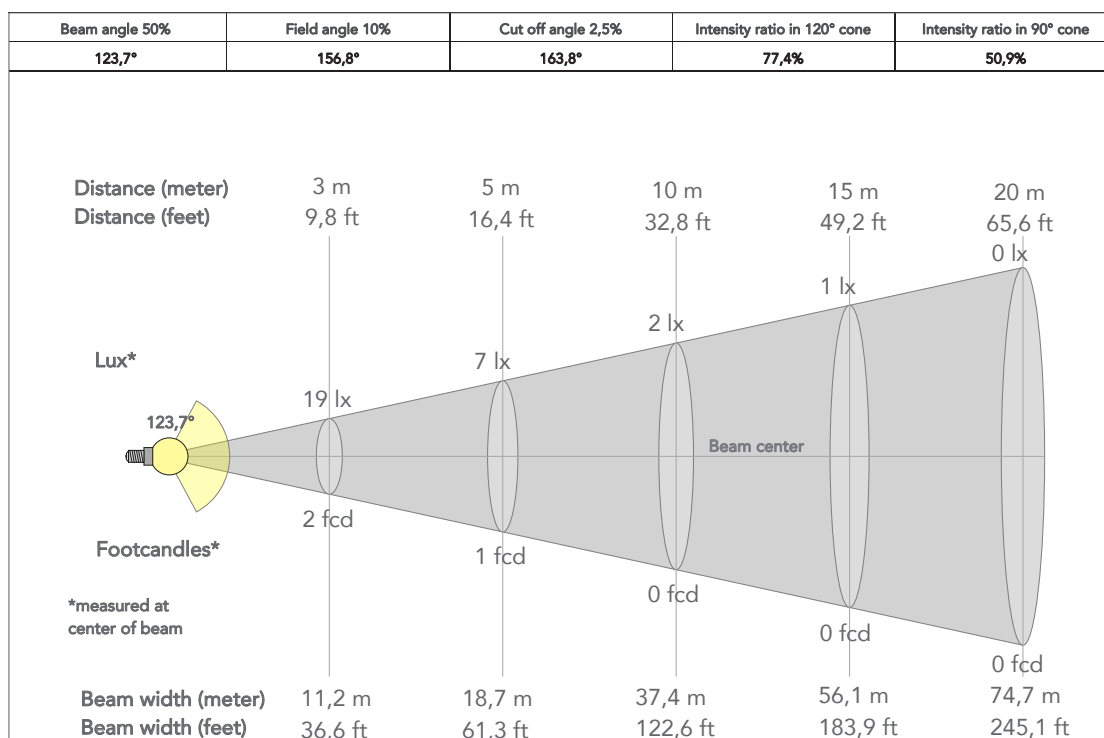
## ACCESSORIES & RELATED PRODUCTS

- DIGIDRIVERIP Master driver for Digi IP series, Art-Net, Kling-Net, IP65, 550W,

- DIGILINKIP Digi IP series signal 4-pin cable

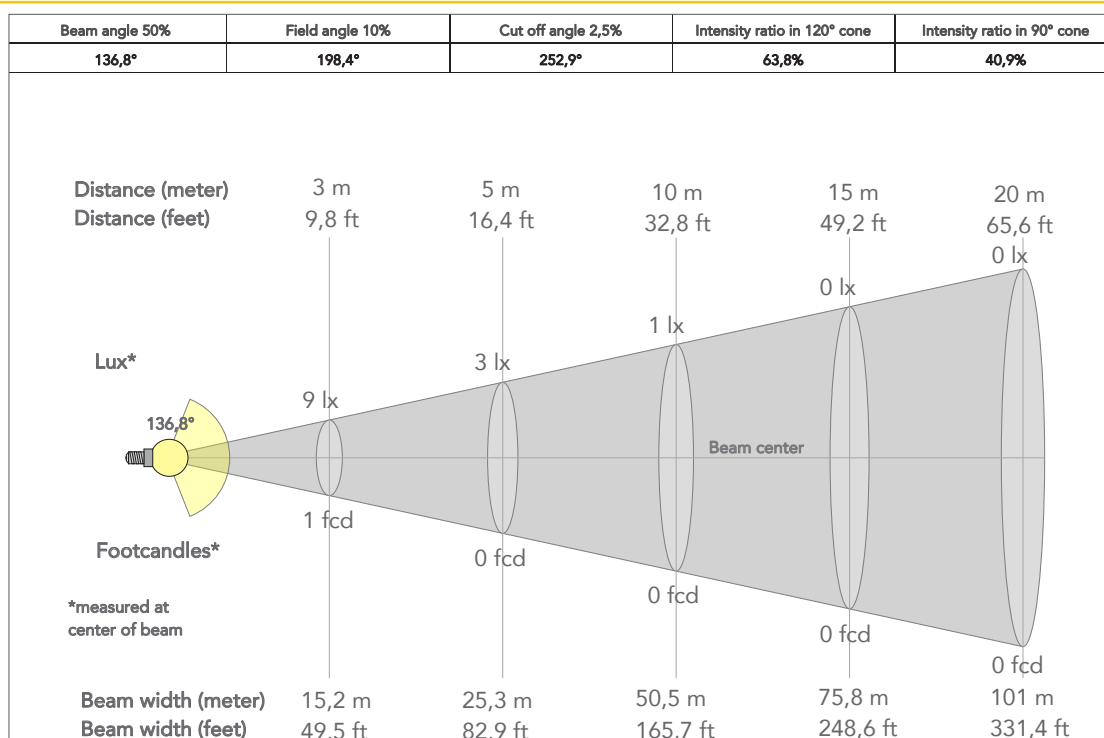
## PRESET FULL ON (WITHOUT COVER)

Beam angle 50%: 123,7°

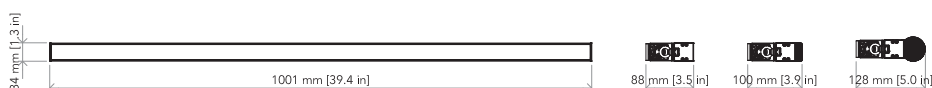


## PRESET FULL ON (FLAT COVER)

Beam angle 50%: 136,8°



## TECHICAL DRAWINGS



For more product  
info and downloads  
visit our website

